

**„HENRI COANDĂ”
AIR FORCE ACADEMY**



ROMANIA

**„GENERAL M. R. STEFANIK”
ARMED FORCES ACADEMY**



SLOVAK REPUBLIC

**“Henri Coandă”
ASSOCIATION FOR RESEARCH AND EDUCATION**



ROMANIA

THE 16-th INTERNATIONAL CONFERENCE

CONFERENCE GUIDE

AFASES 2014

**Anniversary Edition,
dedicated to 65 years of NATO and 10 years
from accession of Romania to
North-Atlantic Treaty Organization**

**22 – 24 May, 2014
Brasov-ROMANIA**

CONFERENCE AGENDA

Thursday 22 May 2014

10 ⁰⁰ - 18 ³⁰	Arrival of participants
19 ⁰⁰	Ice Breaker Evening

Friday 23 May 2014

08 ⁰⁰ - 08 ³⁰	Welcoming and registration
09 ⁰⁰ - 10 ⁰⁰	Opening of the session
	- Opening Speeches
	- Organizational specification
10 ⁰⁰ - 11 ³⁰	Paper presentation on sections (I)
11 ³⁰ - 12 ⁰⁰	Break
12 ⁰⁰ - 14 ⁰⁰	Paper presentation on sections (II)
14 ⁰⁰ - 15 ³⁰	Lunch Break
15 ³⁰ - 17 ⁰⁰	Paper presentation on sections (III)
20 ⁰⁰	Conference dinner

Saturday 24 May 2014

9 ⁰⁰ - 14 ⁰⁰	Sightseeing activities
14 ⁰⁰ - 23 ⁰⁰	Check-out Departure of participants

THE SESSIONS SECTIONS

	Room	Pag.
1. AIR FORCE	E32	7
2. ENGINEERING SCIENCES		10
2.1 Electrical and Electronical Engineering	E10	11
2.2 Mechanical Engineering. Materials and Technology	E13	12
2.3 Renewable Energy and Environment	E10	14
2.4 Applied Mathematics, Computer Science, It&C	E44	15
3. MANAGEMENT	E32	17
4. SOCIO AND HUMANITIES	E72	20
5. WORKSHOP		25

INTERNATIONAL SCIENTIFIC COMMITTEE

Presidents ship:

Commander **Vasile BUCINSCHI**, PhD
Brigadier General **Boris ĐURKECH**, PhD

Members:

Professor **Răzvan - Lucian ANDRONIC**, PhD
Colonel **Mihail ANTON**, PhD
Professor **Hamid R. ARABNIA**, PhD
Brigadier General **Ghiță BÂRSAN**, PhD
Commander **Mircea BOȘCOIANU**, PhD
Professor **Gavrila CALEFARIU**, PhD
Professor **Ivan Menes CAMEJO**, Doc
Associate Professor **Sergiu CATARANCIUC**, PhD
Professor **Constantin -Edmond CRACSNER**, PhD
Professor **Aurel CRIȘAN**, PhD
Researcher **Maria DINESCU**, PhD
Professor **Philippe DONDON**, PhD
Professor **Constantin DUGULEANĂ**, PhD
Professor **Cătălin Marius GHERASIM**, PhD
Lecturer **Mihaela GURANDA**, PhD
Professor **Vladimir HORAK**, CSc
Professor **Maria IOANIDES**, PhD
Professor **Barry JACKSON**, PhD
Professor **Yiwen JIANG**, PhD
Professor **Alexei LEAHU**, PhD
Associate Professor **Ludovic Dan LEMLE**, PhD
Associate Professor **Doru LUCULESCU**, PhD
Professor **Melissa LUKA**, PhD

Professor **Mircea LUPU**, PhD
Associate Professor **Jaromir MARES**, PhD
Professor Eng. **Juraj MIČEK**, PhD
Colonel (GS) **Pavel NECAS**, PhD
Professor **Ștefan NEDELCU**, PhD
Professor **Victor Valeriu PATRICIU**, PhD
Professor **Marian PEARSICA**, PhD
Professor **Ștefan-Gheorghe PENTIUC**, PhD
Associate Professor **Anca PETRE**, PhD
Professor **Ciprian Ioan RĂULEA**, PhD
Professor **Gherman A. DE LA REZA**, PhD
Professor **Daniela ROSCA**, PhD
Commander Eng. **Constantin ROTARU**, PhD
Assistant Professor **Ozgur Koray SAHINGOZ**, PhD
Commander Professor **Gheorghe SAMOILESCU**, PhD
Professor **Florentin SMARANDACHE**, PhD
Professor **Milan SOPOCI**, PhD
Colonel Professor **Robert SZABOLCSI**, PhD
Professor **Alex STEFAN**, PhD
Professor **Maria TUDOR**, PhD
Professor **Corneliu UDREA**, PhD
Professor **Petrica VIZUREANU**, PhD
Professor **Joseph ZARKA**, PhD

ORGANIZING COMMITTEE

President:

LTC **Laurian GHERMAN**, PhD

Members:

Prof. **Ion DINESCU**, PhD

Capt. Cmd. **Ionică CÎRCIU**, PhD

Maj. **Cornel ARAMĂ**, PhD

Lt.col. **Danut BĂLOS**

Lt.col. **Cristian ENE**

WO. **Vasile PRISACARIU**

Assist. Prof. **Liliana MIRON**, PhD

Assist. Prof. **Constantin STRÎMBU**, PhD

Assist. Prof. **Cristian CONSTANTINESCU**, PhD

Maj. **Cătălin CIOACĂ**, PhD

Math. **Carmen URSOIU**

Assist. Prof. **Gheorghe RADU**, PhD

Assist. Prof. **Mihaela GURANDA**, PhD

Assist. Prof. **Mihaela SMEADA**, PhD

Assoc. Prof. **Diana ILIȘOI**, PhD

Assist. **Bogdan Gheorghe MUNTEANU**

Assist. **Daniela NAGY**

Logistics:

Col **Dumitru DINU**

Maj **Bogdan CHIOSEAU**

Lt **Cosmin TĂTULESCU**

WO **Marian MIHALACHE**

Secretary:

Maj **Criste RĂU**

Capt. **Roxana ANTOCHE**

PLENARY SESSIONS

AUDITORIUM

Speaker: Commander Vasile BUCINSCHI, PhD

Rector of “Henri Coandă” Air Force Academy, Braşov, Romania

Speaker: Col. Eng. Lubomír Matta

Deputy Commander for Military Affairs of „General M. R. Stefanik” Armed Forces Academy, Slovak Republic

Speaker: Eng. Rosa Elena PINOS NEIRA, Mg. Sc.

Rector of Technical University of Chimborazo, Riobamba, Ecuador

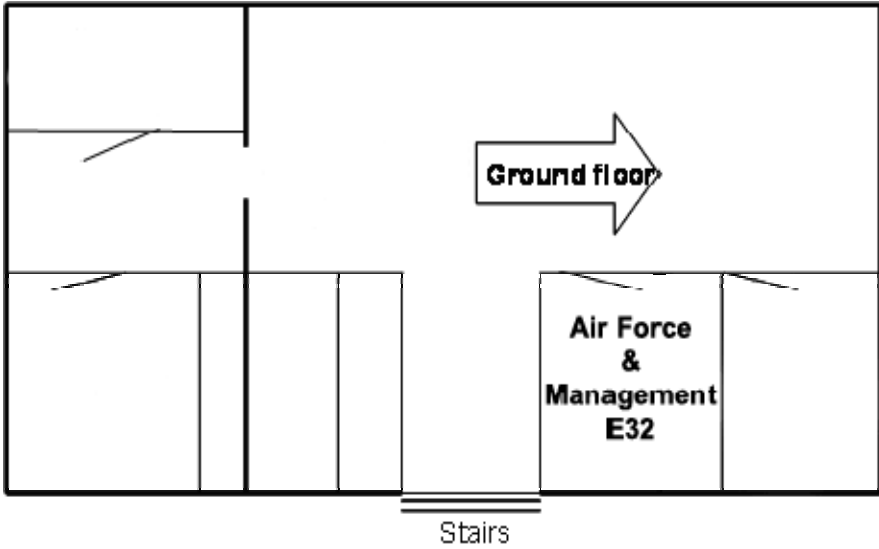
Speaker: General major Laurian ANASTASOF

Chief of Staff of the Romanian Air Force

Speaker: Sebastian POP & Cristian DINU

SC Aerodrone SRL – „Multicopter S800”

1. AIR FORCE
Room E32



MODERATORS:

- **Maria DINESCU**
- **Petrică VIZUREANU**

PHASES ANALYSIS AND STRUCTURAL CHARACTERIZATION OF CuAlMnFe ALLOY

1. **Dragoș Cristian ACHIȚEI***, **Petrică VIZUREANU***, **Mirabela Georgiana MINCIUNĂ***, **Bogdan ISTRATE****, **Andrei Victor SANDU***
*Faculty of Materials Science and Engineering, Gheorghe Asachi Technical University, Iași, Romania, ** Faculty of Mechanical Engineering, Gheorghe Asachi Technical University, Iași, Romania

UNMANNED COMBAT AIR VEHICLE: MQ-9 REAPER

2. **Vladimír BEŇO***, **František ADAMČÍK Jr****
* Kosice, Slovakia, ** Faculty of Aeronautics, Technical University Kosice, Kosice, Slovakia

PLAYING WITH THE SAFETY DUE TO LACK OF RESOURCES

3. **Oliver CIUICĂ***, **Marcel PREDESCU****, **Eduard MIHAI*****
*Air Foce Academy, Brașov, Romania, ** Flight Safety Officer, Kabul International Airport, Afghanistan, *** Air Foce Academy, Brașov, Romania

THEORETICAL ASPECTS RELATED TO FLIGHT SAFETY SYSTEMS IN EARLY WARNING AIR TRAFFIC CONFLICT

4. **Ionică CÎRCIU ***, **Andrei LUCHIAN ****
* “Henri Coandă” Air Force Academy, Brasov,Romania, ** University of Bucharest, Romania

EXPERIMENTAL RESEARCH REGARDING THE MANUFACTURING OF THE ANTI FRICTION MATERIALS USED IN AERONAUTIC CONSTRUCTIONS

5. **Ion DINESCU***, **Gabi MOLDOVAN****, **Ovidiu MOȘOIU***
* “Henri Coandă” Air Force Academy Brasov, Romania, ** “Transilvania” University of Brasov, Romania

MULTIPROCESSOR SYSTEM DEDICATED TO MULTI-ROTOR MINI-UAV CAPABLE OF 3D FLYING

6. **Adrian-Ioan LIȚĂ***, **Ioan PLOTOG***, **Lidia DOBRESCU***
*Faculty of Electronics, Telecommunications and Information Technology, POLITEHNICA University of Bucharest, Romania

THE DRIVELINE ANALYSIS OF HYPER SUSTENTATION DEVICES

7. **Doru LUCULESCU**
“Henri Coandă” Air Force Academy Brasov, Romania

PRECISION APPROACH SYSTEM BASED ON GLOBAL NAVIGATION SATELLITE SYSTEM

8. **Eduard MIHAI**
“Henri Coandă” Air Force Academy, Brasov, Romania
-

GAS SENSORS FABRICATED BY LASER-INDUCED FORWARD TRANSFER

- 9. Alexandra PALLA PAPAVLU*, Fabio DI PIETRANTONIO**, Domenico CANNATÀ**, Massimiliano BENETTI**, Enrico VERONA**, Valentina DINCA*, Thomas LIPPERT***, Maria DINESCU***

*Lasers Department, National Institute for Lasers, Plasma and Radiation Physics, 077125 Magurele, Romania, **"O.M. Corbino" Institute of Acoustics, Italian National Research Council-CNR, Via del Fosso del Cavaliere 100, 00133 Rome, Italy, ***General Energy Research Department, Paul Scherrer Institut, 5232 Villigen PSI, Switzerland

THE STUDY OF ENERGY TRANSFER ON THIN LAYERS ACHIEVED BY ELECTRO-SPARK DEPOSITION WITH TiC ELECTRODE

- 10. Manuela-Cristina PERJU, Petrică VIZUREANU, Carmen NEJNERU**
Faculty of Materials Science and Engineering, "Gheorghe Asachi" Technical University from Iași, România
-

THE AERODYNAMIC ANALYSIS OF HIGH LIFT DEVICES

- 11. Vasile PRISACARIU*, Andrei LUCHIAN****

*Universitatea Transilvania Braşov, **Universitatea Politehnica Bucureşti, Romania

CONSIDERATIONS ABOUT THE LIFE EXTENSION PROGRAMS BY TECHNICAL RESOURCE RENEWAL APPLIED TO THE SURFACE-TO-AIR MISSILES

- 12. Marius RADULESCU*, Vasile SANDRU****

*Electromecanica Ploiesti, Romania, ** „Henri Coanda” Air Force Academy, Brasov, Romania

UNSTEADY AERODYNAMIC MODEL FOR AN AIRFOIL WITH TIME DEPENDENT BOUNDARY CONDITIONS

- 13. Constantin ROTARU, Raluca Ioana EDU, Mihai ANDRES-MIHĂILĂ**
Faculty of Mechatronics and Armament Integrated Systems, Military Technical Academy, Bucharest, Romania
-

ELECTRONIC WAR AND MODERNIZATION OF AIR DEFENCE MEANS

- 14. Milan SOPÓCI, Eubomír MATTA**

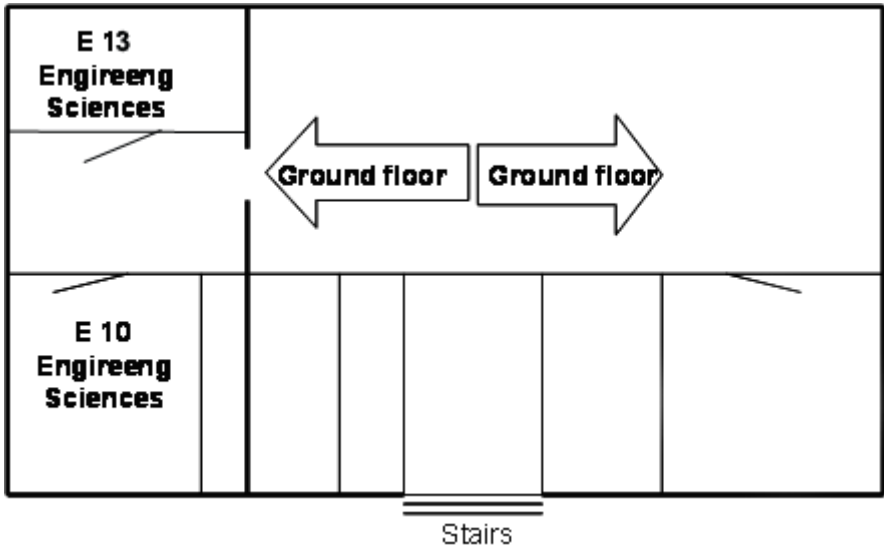
Department of Management, The Armed Forces Academy of General Milan Rastislav Štefánik in Liptovský Mikuláš

THE ANALYSIS OF THE ALLOY $AlCu_4Mg_{1.5}Mn$ USED IN THE CONSTRUCTION OF UTILITY AIRCRAFTS

- 15. Cătălin-Andrei ȚUGUI, Petrică VIZUREANU, Dragoş Cristian ACHIȚEL, Ion PALAMARCIUC, Andrei-Victor SANDU**

Faculty of Materials Science and Engineering, Technical University "Gheorghe Asachi" of Iasi-Romania

2. ENGINEERING SCIENCES
Room E 13, E10



2.1. ELECTRICAL AND ELECTRONICAL ENGINEERING. Room E10

MODERATOR:

➤ **Gheorghe SAMOILESCU**

MOBILE APPLICATION FOR BUSINESS CONTROL OF TELECOMMUNICATION SERVICES

1. **Alexandru BALICA, Mihai MIJEA, Florin SANDU**
"Transilvania" University, Brasov, Romania
-

CODE ACQUISITION WITH DOUBLE CORRELATOR IN DSSS RECEIVERS

2. **Otilia CROITORU**
Electrical Engineering and Computer Science, Transilvania University of Brasov, Romania
-

HIGH POWER ELECTROMAGNETIC SYSTEMS FOR MILITARY APPLICATIONS

3. **Vasile DOBREF, Alexandru SOTIR, Octavian TĂRĂBUȚĂ, Cătălin CLINCI**
*Marine Engineering Faculty, "Mircea cel Bătrân" Naval Academy, Constanța, Romania
-

MULTIPROCESSOR SYSTEM DEDICATED TO MULTI-ROTOR MINI-UAV CAPABLE OF 3D FLYING

4. **Adrian-Ioan LIȚĂ, Ioan PLOTOG, Lidia DOBRESCU**
*Faculty of Electronics, Telecommunications and Information Technology, Politehnica
University of Bucharest, Romania
-

FRACTAL SECTOR ANTENNA WITH RESONATORS ARRANGED IN A SQUARE SHAPE

5. **Gheorghe MORARIU*, Ecaterina Liliana MIRON****
*Electronics & Computers Department, "Transilvania" University, Brasov, Romania, **Air
Defense Department, Air Force Academy, Brasov, Romania
-

RULES FOR LIMITING RISK EXPOSURE OF THE HUMAN BODY TO ELECTROMAGNETIC FIELDS

6. **Gheorghe SAMOILESCU*, Radu SERGHEI**, Florențiu DELIU*,
Laura CIZER**
*Mircea cel Bătrân Naval Academy, Constanța, România, ** Barklav Company, Constanța,
România
-

THE ANALYSIS OF NAVAL ELECTROMAGNETIC SYSTEMS USING SOFTWARE PROGRAMS

7. **Gheorghe SAMOILESCU*, Serghei RADU**, Florentiu DELIU*,
Raluca MATES***
*Academia Navală Mircea cel Bătrân, Constanța, România, ** Stena Group, Constanța, România
-

ABOUT SINGLE-PHASE VOLTAGE RECTIFIERS OPERATION

8. **Constantin STRIMBU**
Faculty of Aeronautic Management, "Henri Coanda" Air Force Academy, Brasov, Romania
-

2.2 MECHANICAL ENGINEERING MATERIALS AND TECHNOLOGY Room E13

MODERATOR:

➤ **Fulga TANASĂ**

1. **SOME ASPECTS ABOUT AIRCRAFT STRUCTURES RELIABILITY**
Daniel BOSNICEANU, Marian VATAVU
Faculty of Mechatronics and Integrated Armament Systems, Military Technical Academy,
Bucharest, Romania

2. **COMPUTER SIMULATION BASED COMPARATIVE STUDY ON THE
SOLIDIFICATION OF A CAST IRON AND STEEL CASTING**
Aurel CRIȘAN, Ioan CIOBANU, Daniela IONESCU, Maria STOICĂNESCU
*Transilvania University of Brașov, Romania

3. **A NOVEL APPROACH FOR ARMOR APPLICATIONS OF SHEAR
THICKENING FLUIDS IN AVIATION AND DEFENSE INDUSTRY**
Melih Cemal KUŞHAN*, Selim GÜRGEN*, Tolga ÜNALIR,
Sinem ÇEVİK*****
* Department of Mechanical Engineering, ESOGU, Eskişehir, Turkey, ** Payra Design Co.
Inc., Eskişehir, Turkey, *** Department of Materials Science and Engineering, Ondokuz Mayıs
University, Samsun, Turkey

4. **AN APPROACH FOR STATIC CALIBRATION OF ACCELEROMETER
MMA8451Q**
Marin MARINOV, Zhivo PETROV
Aviation Faculty, NVU "V. Levski", Dolna Mitropolia, Bulgaria

5. **ALLAN VARIANCE ANALYSIS ON ERROR CHARACTERS OF LOW-COST
MEMS ACCELEROMETER MMA8451Q**
Marin MARINOV, Zhivo PETROV
Aviation Faculty, NVU "V. Levski", Dolna Mitropolia, Bulgaria

6. **ON BOARD DIAGNOSIS IMPLICATIONS ON THE VIABILITY OF
MILITARY PATROL AND INTERVENTION VEHICLES**
Marian MITROI*, Cornet ARAMĂ**
*Faculty of Mechanical Engineering, "Transilvania" University of Brașov, Brasov, Romania
**"Henri Coandă" Air Force Academy, Brasov, Romania

7. **EXPERIMENTAL RESEARCH CONCERNING THE INFLUENCE
OF THE ON-BOARD HYDROGEN SUPPLY EQUIPMENT
ON THE ENGINES COMBUSTION**
Marius Nicolae MOLDOVEANU*, Cornel ARAMĂ**
*Sunrise Technology Co. Ltd, Jiaxing, Zhejiang, China, ** "Henri Coandă" Air Force
Academy, Brasov, Romania

8. **ASPECTS OF THE POWER BALANCE FOR LASER CUTTING PROCESS**
Mihaela NISTORAN-BOTIȘ*, Remus BOBOESCU**
Mechanical Faculty, University Politehnica, Timișoara, Romania, ** Engineering, Faculty,
University Ioan Slavici, Timișoara, Romania

***STRUCTURED DESCRIPTION FOR OXYGEN ASSISTED LASER CUTTING
PROCESS***

9. **Mihaela NISTORAN-BOTIȘ*, Remus BOBOESCU****
Mechanical Faculty, University Politehnica, Timișoara, Romania, ** Engineering, Faculty,
University Ioan Slavici, Timișoara, Romania
-

WOOD PROCESSING BY LASER TOOLS

10. **Adrian PETRU, Aurel LUNGULEASA**
Faculty of Wood Engineering, Transilvania University, Brașov, România
-

COLOUR MEASUREMENT USING DIGITAL IMAGE ANALYSIS

11. **Adrian PETRU, Aurel LUNGULEASA**
Faculty of Wood Engineering, Transilvania University, Brașov, România
-

***THE INFLUENCE OF HEAT AND SURFACE TREATMENT ON THE WEAR
RESISTANCE OF TITANIUM ALLOYS***

12. **Camelia PITULICE, Ioan GIACOMELLI, Maria STOICANESCU**
Transilvania University of Brașov, Romania
-

***ESEM AND X-RAY EMISSION SPECTRA OF TITANIUM ALLOY IN
DIFFERENT STRUCTURAL STATUS***

13. **Camelia PITULICE, Adriana ZARA, Nicoleta TORODOC, George VASILE**
Transilvania University of Brașov, Romania
-

***EVALUATION OF STRESS-STRAIN PROPERTIES OF SOME NEW
POLYMER-CLAY NANOCOMPOSITES FOR AEROSPACE AND DEFENCE***

14. **APPLICATIONS**
Fulga TANASĂ, Mădălina ZĂNOAGĂ, Raluca DARIE
"Petru Poni" Institute of Macromolecular Chemistry, Iași, România
-

MATHEMATICAL MODEL FOR A JET ENGINE

15. **Alexandru-Nicolae TUDOSIE**

Department of Electrical, Power Systems and Aerospace Engineering, University of Craiova,
Craiova, Romania

MATHEMATICAL MODEL FOR A JET ENGINE

16. **Alexandru-Nicolae TUDOSIE**

Department of Electrical, Power Systems and Aerospace Engineering, University of Craiova,
Craiova, Romania

COMPLEX TEXTILE STRUCTURES AS REINFORCEMENT

17. **FOR ADVANCED COMPOSITE MATERIALS**

Mădălina ZĂNOAGĂ, Fulga TANASĂ
"Petru Poni" Institute of Macromolecular Chemistry, Iași, România

2.3. RENEWABLE ENERGY AND ENVIRONMENT

Room E10

MODERATOR:

➤ **Aurel LUNGULEASA**

STUDYING ENVIRONMENTAL PROBLEMATICS AND HAZARDS WITH HELP OF INFORMATICS APPLICATIONS (SEPHIA)

1. **Bogdan CIORUȚA***, **Mirela COMAN****, **Andrei-Alin CIORUȚA***
*Faculty of Science, North University Center Baia Mare, Technical University of Cluj-Napoca, Romania, **Faculty of Mineral Resources and Environment, North University Center Baia Mare, Technical University of Cluj-Napoca, Romania

THE IDEA OF IMPLEMENTING A MATHEMATICS PLATFORM FOR ANDROID DEVICES WITH HELP OF APP INVENTOR

2. **Bogdan CIORUȚA***, **Mirela COMAN****
*Faculty of Science, North University Center Baia Mare, Technical University of Cluj-Napoca, Romania, **Faculty of Mineral Resources and Environment, North University Center Baia Mare, Technical University of Cluj-Napoca, Romania

ECONOMICS CONSIDERATION ON WOODEN BIOMASS CONSUMPTION

3. **Tatiana GRÎU**, **Aurel LUNGULEASA**
Wood Engineering Faculty, Transylvania University, Brasov, Romania

HYGROSCOPICITY OF CHIPBOARD VERSUS SOLID WOOD

4. **Aurel LUNGULEASA**
Faculty of Wood Engineering, Transylvania University, Brasov, Romania

UTILIZATION OF TECHNICAL INNOVATION ON A NEW PRODUCT

5. **Raluca NICOLAE (MANESCU)**, **Anisor NEDELCU**
Transilvania University of Brasov, Romania

MANAGEMENT CONCEPTS TO SUPPORT FLEXIBLE MANUFACTURING SYSTEMS DEVELOPMENT IN ECONOMIC ENVIRONMENT

6. **Raluca NICOLAE (MANESCU)**, **Anisor NEDELCU**
Transilvania University of Brasov, Romania

QUALITY MANAGEMENT APPLIED THROUGH QFD METHOD

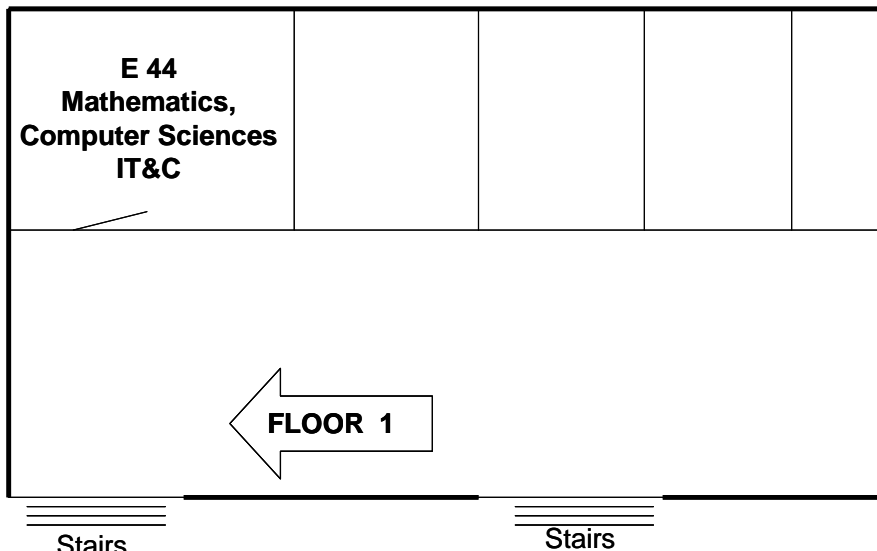
7. **Ramona PAKOCS**
Transilvania University of Brasov, Romania

RISK MANAGEMENT AND RISK TYPE ANALYSIS SPECIFIC TO INTELLECTUAL PROPERTY IN INDUSTRIAL PROFILE COMPANIES

8. **Ramona PAKOCS**, **Nourăș Barbu LUPULESCU**
Transilvania University of Brasov, Romania

2.4. APPLIED MATHEMATICS, COMPUTER SCIENCE, IT&C

Room E44



MODERATORS:

- **Ivan MENES CAMEJO**
- **Gheorghe RADU**

INVITED PAPER:

1. ***STABILITY CONTROL AND ABSOLUTE STABILIZATION OF THE ROLLING OSCILATION FOR SHIPS AND AIRCRAFT***
Mircea LUPU
Corresponding member of Romanian Scientists Academy, Faculty of Mathematics and Computer Science, Transilvania University of Brasov, Romania, e-mail: m.lupu@unitbv.ro

2. ***INVESTIGATION OF SWEEP APPLIED TO ROTATING AXIAL CASCADES AND NUMERICAL SIMULATIONS OF FLOW***
Irina Carmen ANDREI
"Elie Carafoli" National Institute for Aerospace Research – INCAS, Bucharest, Romania

3. ***AN APPLICATION TO Mastroianni OPERATORS***
Cristina Sanda CISMAȘIU
Transilvania University of Brasov, Romania

4. ***THE EQUATION OF DISPERSION AND THE DISPLACEMENT VECTOR IN THE SYMMETRIC CASE***
Mihaela DUMITRACHE, Camelia GHELDIU
Faculty of Mathematics and Computer Science, University of Pitesti, Pitești, Romania

5. ***BUILDING A HYBRID SECURE SOCKET LAYER PROTOCOL***
Gabriela MOGOS
Facultad de Informatica y Electronica, Escuela Superior Politecnica de Chimborazo, Riobamba, Ecuador

6. ***ON THE MAX PARETO POWER SERIES DISTRIBUTION***
Bogdan Gheorghe MUNTEANU
"Henri Coanda" Air Force Academy, Brasov, Romania

7. ***USER AUTHENTICATION TO A WEB SITE USING FINGERPRINTS***
Mihai Lica PURA
Faculty of Military Electronic and Information Systems, Military Technical Academy, Bucharest, Romania

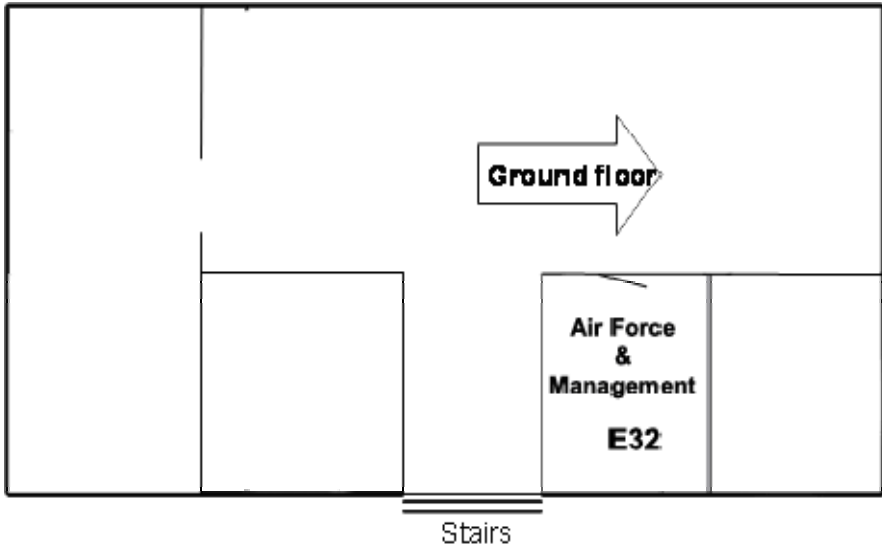
8. ***IDENTITY-BASED CRYPTOGRAPHY: FROM PROPOSALS TO EVERYDAY USE***
Mihai Lica PURA, Victor Valeriu PATRICIU
Faculty of Military Electronic and Information Systems, Military Technical Academy, Bucharest, Romania

9. ***AN ASYMPTOTIC PROPERTY OF THE MERGING ALGORITHM***
Paul VASILIU
Faculty of Marine Engineering, "Mircea cel Bătrân" Naval Academy, Constanta, Romania

10. ***SOCIAL ROBOT IN ATTENTIONAL THERAPIES***
Paulina VÉLEZ*, Antonio FERREIRO**
*Faculty of Computer and Electronics, Politecnice University of Chimborazo, Riobamba, Ecuador, ** Faculty of Health Sciences, National University of Chimborazo, Riobamba, Ecuador

3. *MANAGEMENT*

Room E32



MODERATOR:

➤ **Constantin DUGULEANĂ**

1. **ANALYSIS OF THE INSTRUMENTS AND TECHNIQUES USED FOR TOTAL QUALITY MANAGEMENT. APPLICABILITY AND IMPLICATIONS IN THE EDUCATIONAL SYSTEM.**
Arina CIUREA, Anișor NEDELICU
Transilvania University of Brasov, Brașov, România

2. **VEHICLE DAMAGE – PROFIT DECREASE FACTOR FOR THE ROMANIAN INSURANCE MARKET**
Gherasim Solovestru DOMIDE*, Alexandru DOMIDE**
* Academy of Economic Studies, Bucharest, Romania, ** Rocredit Broker, Baia Mare, Romania

3. **AUTOREGRESSIVE MODELS USED IN THE STUDY OF LABOR MARKET**
Constantin DUGULEANĂ, Steliana BUSUIOCEANU
Faculty of Economic Sciences and Business Administration, Transilvania University, Brașov, Romania

4. **CHANGES IN TOP 10 EUROPEAN BRAND CORPORATIONS DURING THE ECONOMIC CRISIS**
Liliana DUGULEANĂ, Constantin DUGULEANĂ
Faculty of Economic Sciences and Business Administration, Transilvania University, Brașov, Romania

5. **ANALYSIS OF THE ECONOMIC PERFORMANCE OF A ORGANIZATION USING MULTIPLE REGRESSION**
Flavia FECHETE, Anisor NEDELICU
Faculty of Technological Engineering and Industrial Management, Transilvania University of Brasov, Brasov, Romania

6. **FEW ASPECTS REGARDING THE PRINCIPLES OF ENVIRONMENTAL PROTECTION IN THE EU**
Alexandru Florin MĂGUREANU
Faculty of Juridical and Administrative Sciences, Spiru Haret University, Brasov, Romania

7. **ENVIRONMENTAL PROTECTION AND ARMED CONFLICTS IN NATIONAL AND INTERNATIONAL REGULATIONS**
Alexandru Florin MĂGUREANU*, Ioan ȘTEFU**
*Faculty of Juridical and Administrative Sciences, Spiru Haret University, Brasov, Romania, ** Faculty of Juridical and Administrative Sciences, Spiru Haret University, Brasov, Romania =

8. **EMOTIONAL INTELLIGENCE OF MANAGER AS BASED ASSUMPTION OF MANAGER COMPETENCES IN AIR FORCE ACADEMY CONDITIONS**
Mária PETRUFOVÁ*, Eva RÉVAYOVÁ**
*Department of Management, The Armed Forces Academy of General Milan Rastislav Štefánik in Liptovský Mikuláš, ** Department of Social Sciences and Languages, The Armed Forces Academy of General Milan Rastislav Štefánik in Liptovský Mikuláš, Soovak Republic

THE INTERALLIED CONFEDERATION OF RESERVE OFFICERS-CIOR, AND PERSPECTIVE OF RELATION WITH EX-SOVIET UNION (E-SU) STATES IN THE CONTEXT OF CRIMEA CRISIS.

9. ***ROLES OF THE PARAMILITARY ORGANIZATIONS AND MILITIA OF ETHNIC MINORITIES IN THE POLITICAL AND MILITARY TURBULENCE THEATRE***

Ioan PITICAR

Air Force Academy "Henri Coanda", Brasov, Romania

ANALYSIS OF THE POSSIBILITY OF PROVIDING A COMPLEX MOTIVATIONAL SYSTEM FOR PUBLIC INTERNAL AUDITORS BY MANAGEMENT

- 10.

Marian SFETCU

Faculty of Economics Sciences and Business Administration of „Babeş - Bolyai”
University of Cluj Napoca.Romania

BEYOND THE FAST-FOOD MODEL OF EDUCATION. IS THE SCHOOL CAPABLE TO FOSTER CREATIVITY?

- 11.

Ioan ŞUŞNEA*, Grigore VASILIU*, Simona SPIRIDON**

*ACIEE, University "Dunarea de Jos", Galati, Romania, ** CJRAE, Galati, Romania

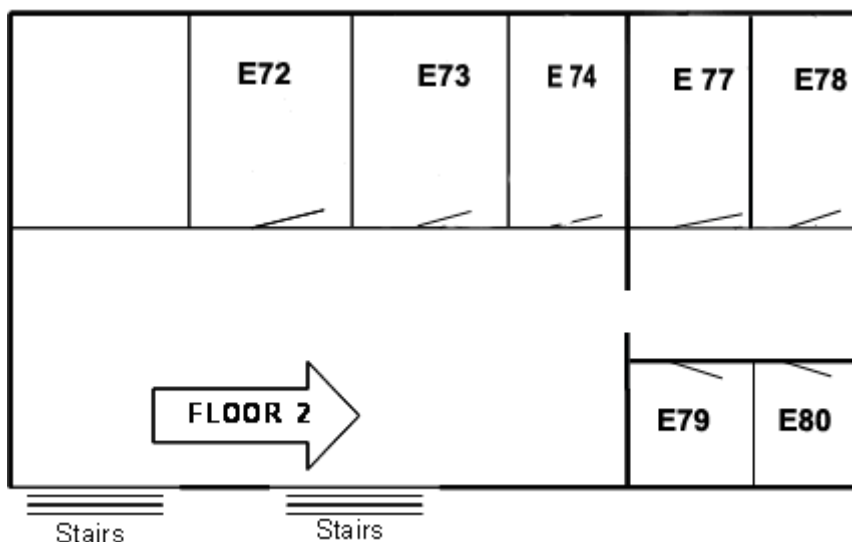
THE BLIND MEN AND THE ELEPHANT – A BRIEF ANALYSIS OF THE ROMANIAN STRATEGY FOR RDI

- 12.

Ioan ŞUŞNEA*, Grigore VASILIU*, Simona SPIRIDON**

*ACIEE, University "Dunarea de Jos", Galati, Romania, ** CJRAE, Galati, Romania

4. SOCIO AND HUMANITIES



Secțiunea	Moderator	Sala
Management educațional și calitatea educației	Diana Ilișoi	E 74
Limbi străine	Daniela Nagy	E 79
Consiliere	Mihaela Guranda	E 73
Psihologie	Mihaela Oancea	E 78
Sociologie	Mihail Anton	E 80

1. **OPEN DISTANCE EDUCATION – NEW CHALLENGES**
Anca ANDRONIC
Faculty of Psychology and Pedagogy, University Spiru Haret, Braşov, România

2. **DEFINITION OF VOLUNTEERING IN SOCIAL SCIENCES**
Răzvan-Lucian ANDRONIC
Faculty of Psychology and Pedagogy, University Spiru Haret, Braşov, România

3. **VOLUNTEERING: THEORETICAL APPROACHES AND PERSONAL CHARACTERISTICS**
Răzvan-Lucian ANDRONIC
Faculty of Psychology and Pedagogy, University Spiru Haret, Braşov, România

4. **PSYCHOSOCIAL ASPECTS OF MORAL EDUCATION IN DETENTION**
Cristiana BALAN
Faculty of Psychology and Pedagogy, University Spiru Haret, Braşov, România

5. **THE ROLE OF PSYCHOLOGICAL COUNSELING IN IMPROVING BEHAVIORAL DYSFUNCTIONS IN RECIDIVIST CRIMINALS**
Cristiana BALAN
Faculty of Psychology and Pedagogy, University Spiru Haret, Braşov, România

6. **EDUCATION AND MANAGEMENT IN A DEMOCRATIC PERSPECTIVE**
Angela BOGLUT
“Vasile Goldiş” Western University of Arad, Arad, Romania, Individual Office of Psychology Angela Bloguţ, Timisoara, Romania

7. **FORMING THE EMPATHIC CAPACITY OF THE TEACHERS**
Angela BOGLUT
“Vasile Goldiş” Western University of Arad, Arad, Romania, Individual Office of Psychology Angela Bloguţ, Timisoara, Romania

8. **MOBBING: PSYCHOLOGICAL TERROR IN THE WORKPLACE**
Viorel CONSTANTINESCU
Association of Applied Psychology in the field of Private Security

9. **RELEVANT PSYCHOLOGICAL FACTORS FOR SUCCESS**
Georgiana CORCACI
Department of Psychology, University “Petre Andrei” of Iasi, Romania

10. **THE ROLE OF PSYCHOLOGICAL FACTORS IN THE PROGNOSIS OF SCHIZOPHRENIA**
Camelia Maria DINDELEGAN
Associate Professor Department of Psychology, University of Oradea, Clinic of Psychiatry, “Dr. Gavril Curteanu” Clinical Hospital, Oradea, Romania

11. **THE INFLUENCE OF THE ATTRIBUTIONAL STYLE AT STRESS LEVEL PERCEIVED BY THE PEOPLE DIAGNOSED WITH DEPRESSION**
Camelia DINDELEGAN*, Florina SERAC-POPA**
*Faculty of Social Humanistic Science, Department of Psychology, University of Oradea Oradea, Romania Clinic of Psychiatry, “Dr. Gavril Curteanu” Clinical Hospital, Oradea, Romania ** Psychologist -Clinic of Psychiatry, “Dr. Gavril Curteanu” Clinical Hospital, Oradea, Romania

12. **THE ANALYSES OF SIGNIFICANT CHANGES IN THE FIELD OF PROFESSIONAL CAREER**
Mihaela GURANDA
Air Force Academy, Brasov, Romania

13. **REFLECTIVE JOURNAL WRITING AS A METACOGNITIVE TOOL**
Ramona HENTER, Elena Simona INDREICA
Faculty of Psychology and Educational Sciences, University of Brasov, Romania
-
14. **COMMUNICATION BARRIERS IN THE WORK OF THE SCHOOL COUNSELLOR**
Elena HURJUI
Department of Psychology and Pedagogy, Institution: Spiru Haret University, Braşov, Romania
-
15. **COUNSELING OF CHILDREN COMING FROM DISADVANTAGED ENVIRONMENTS TO PREVENT FAILURE AND AVOID SCHOOL ABANDONEMENT**
Elena HURJUI
Department of Psychology and Pedagogy, Institution: Spiru Haret University, Braşov, Romania
-
16. **IMPACT OF QUALITY MANAGEMENT ON EDUCATION: PERSPECTIVES**
Diana ILIŞOI
Faculty of Aeronautical Management, “Henri Coanda” Air Force Academy, Brasov, Romania
-
17. **TRAINING PROGRAMS APPROACHES IN THE CONTEXT OF ADULT EDUCATION. CASE STUDY ON A TRAINING PROGRAM IN DEVELOPING ENTREPRENEURIAL COMPETENCES**
Nicoleta LIŢOIU
Teacher Training Department, University POLITEHNICA of Bucharest, Bucharest, Romania
-
18. **THE EDUCATIONAL PARTNERSHIP THE PARENT-STUDENT-TEACHER RELATIONSHIP**
Roxana Viorica MAIER
Universitatea de Vest „Vasile Goldiș” din Arad, Arad, România
-
19. **PRIMARY SCHOOL EDUCATION- A PREMISE FOR A HARMONIOUS EDUCATIONAL DEVELOPMENT**
Roxana MAIER, Angela BLOGUȚ
“Vasile Goldiș” Western University of Arad, Arad, Romania, Individual Office of Psychology Angela Bloguț, Timisoara, Romania
-
20. **THE EFFECTIVE TRIAD: IMPACT, DIGITAL CONTENT AND ADULT EDUCATION. A CASE STUDY APPROACH**
Loredana MANASIA, Alina BOZON
Faculty of Psychology and Educational Sciences, University of Bucharest, Bucharest, Romania
-
21. **IMPLICATION OF PARENTAL AGGRESSION IN CHILDREN PERSONALITY DEVELOPMENT**
Aurelia MORARU
Psychosociology Faculty, “Andrei Șaguna” Constanta University
-
22. **THE TEENAGERS AND YOUNG BEHAVIOUR, DETERMINATION AND SELF-ADJUSTING VALUES**
Aurelia MORARU*, Adina MORARU**
* “Andrei Șaguna” University, Psychosociology Faculty, Constanța, ** Clinical psychologist / psychotherapist -Psychology Office Adina Moraru, Bucharest
-

23. ***INSTANCES OF FEMINITY IN THE NOVEL “VOICA”, BY DE HENRIETTE YVONNE STAHL***
Daniela NAGY
Faculty of Aeronautical Management, “Henri Coanda” Air Force Academy, Brasov, Romania
-
24. ***A STUDY ON THE TRAINING AND FORMATION NEEDS OF TEACHING STAFF IN TECHNICAL UNIVERSITIES***
Gabriela Carmen OPROIU
Associated Professor PhD., Teacher Training Department, University Politehnica of Bucharest
-
25. ***THE IMPORTANCE OF NEUROPSYCHOLOGY IN CLINICAL PRACTICE***
Maria Dorina PAȘCA
Assistant Professor Ph.D, University of Medicine and Pharmacy Târgu-Mureș
-
26. ***PSYCHOLOGICAL ANALYSIS OF PILOT ACTIVITY***
Mihaela PĂUNESCU*, Clara – Maria NEACSU**
* Psiholog, UM 01838, Boboc, ** Lt. Psiholog, UM 02470, Buzău, Romania
-
27. ***A PREGNANT TEENAGER. ASSESSMENT, DIAGNOSIS, INTERVENTION 15 YEARS LATER***
Aurora SIMIGIU
Faculty of Psychology and Educational Sciences, University of Bucharest, Romania
-
28. ***CHALLENGES OF IRAQI INTELLIGENCE IN POST-SADDAM ERA***
Constantin-Ioan STAN, Ecaterina CEPOI
„Carol I” National Defense University, Bucharest, Romania
-
29. ***DEATH IN THE ROMANIAN CULTURE CASE STUDY PRESENTATION/ ADLERIAN APPROACH***
Mihaela Alina STATE
Cabinet individual de psihologie 1BV4243/TEL. 0770595825, Romania
-
30. ***COMMUNICATION AND EDUCATION, RECIPROCITY IN THE PARENT-CHILD RELATIONSHIP***
Marilena TICUSAN
Faculty of Psychology and Pedagogy, University of Spiru Haret, Brasov, Romania
-
31. ***SCHOOL DROPOUT IN CURENT SOCIETY***
Marilena TICUSAN
Faculty of Psychology and Pedagogy, University of Spiru Haret, Brasov, Romania
-
32. ***THE ROLE OF THE FEUERSTEIN INSTRUMENTAL ENRICHMENT PROGRAM IN THE SOCIO-EMOTIONAL DEVELOPMENT OF CHILDREN***
Otilia Anca TODOR
Faculty of Psychology and Pedagogy, Spiru Haret University, Brasov, Romania
-
33. ***COGNITIVE EDUCATION AND R. FEUERSTEIN’S CONCEPT ON MEDIATED LEARNING***
Otilia Anca TODOR
Faculty of Psychology and Pedagogy, Spiru Haret University, Brasov, Romania
-
34. ***PERSONALITY, IDENTITY AND PSYCHIC MATURITY***
Florin VANCEA
University Lecturer PhD, Spiru Haret University, Brasov

***INMATES' PERCEPTION, MOTIVATION AND FEELINGS TOWARDS
SCHOOL ON EDUCATIONAL ACTIVITIES CONDUCTED IN GIURGIU***

35. ***PRISON***

Petronela Sorina VÎRBAN*, Florin Marian ANTONESCU**

*Faculty of Psychology and Educational Sciences, University of Bucharest, Bucharest, Romania, ** Faculty of Social Sciences, "Lucian Blaga" University of Sibiu, Sibiu, Romania

BECOMING A PSYCHOTHERAPIST

36. **Loredana VÎȘCU**

Faculty of Social Sciences, "Eftimie Murgu" University of Resita, Resita, Romania

***BioSpecter PSYCHOMETRIC SYSTEM OR EXPERT SYSTEM OF
PERSONALITY EVALUATION***

37. **Corina Mihaela ZAHARIA, Grigore DUMITRU**

Corina Mihaela ZAHARIA Phone +40746119700, e-mail: cmz1959@gmail.com,

DUMITRU Grigore, Phone +40722639323, e-mail: dumitru_grigore@biospecter.com

5. WORKSHOP

22 Mai 2014

15.00	DESCHIDEREA WORKSHOPURILOR /Sala E 72
15.15-17.15	W1 ABORDAREA TULBURĂRILOR ANXIOS-DEPRESIVE ÎN PSIHLOGIA CLINICĂ Cătălin - Marius Gherasim (<i>Psihologie clinică și psihoterapie</i>) / Sala E 72
17.15-19.15	W4 METAFORA – TEHNICĂ CONSACRATĂ ÎN PSIHOTERAPIA ADLERIANĂ Cătălin - Marius Gherasim (<i>Psihologie clinică și psihoterapie</i>) / Sala E 72

23 mai 2014

08.30-09.30	DESCHIDEREA CONFERINȚEI / AULA ACADEMIEI FORȚELOR AERIENE "HENRI COANDĂ"
09.30-09.45	Sesiune de poze
10.00-12.00	W5 PSIHODIAGNOZA TRAUMEI Constantin - Edmond Cracsner (<i>Psihologie pentru aparare, ordine publica si siguranta nationala</i>)/ Sala E 77
12.00-14.00	W3 CONCEPTUL CISM (CRITICAL INCIDENT STRES MANAGEMENT) Daniela Hiera, Roxana Maier (<i>Psihologia Muncii, Transporturilor si Serviciilor</i>)/ Sala E 73
	W14 PSIHLOGIA ALTERNATIVĂ LA CONFLUENȚĂ CU INGINERIA PSIHLOGICĂ - PREZENTAREA UNUI INSTRUMENT DE EVALUARE PSIHLOGICĂ CARE ADUCE NOI PERSPECTIVE ȘI ABORDĂRI (<i>Psihologia Muncii, Transporturilor si Serviciilor</i>) Corina Mihaela Zaharia/ Sala E 78
	W10 ROLURI, COOPERARE ȘI DECIZIE ÎN GRUPURILE DE MUNCĂ Răzvan Andronic, Anca Andronic (<i>Psihologia Muncii, Transporturilor si Serviciilor</i>)/ Sala E 74

	<p>W11 DEZVOLTAREA INTELIGENȚEI SOCIALE Mariana Caluschi, Mihaela Otomega (<i>Psihologie Educationala, Consiliere Scolara si Vocationala</i>) / Sala E 74</p> <p>W12 OPINII, PERCEPȚII ȘI MOTIVAȚII ALE DEȚINUȚILOR FAȚĂ DE ACTIVITĂȚILE DE EDUCAȚIE DESFĂȘURATE ÎN PENITENCIAR Florin Antonescu (<i>Psihologie pentru aparare, ordine publica si siguranta nationala</i>) / Sala E 77</p>
14.00-15.00	Pauză de masă
15.00-17.00	<p>W2 TERAPII OCUPATIONALE - GRAFOTERAPIE Maria Dorina Pașca (<i>Psihologie Educationala, Consiliere Scolara si Vocationala</i>) / Sala E 74</p> <p>W7 PERSPECTIVE ÎN EVALUARE ÎN DOMENIUL PSIHOLOGIEI JUDICIARE Hadrian Marius Jean Vaida (<i>Psihologie pentru aparare, ordine publica si siguranta nationala</i>) / Sala E 72</p> <p>W9 ORIENTARI ACTUALE IN EVALUAREA PSIHOLOGICA A CONDUCATORILOR AUTO Ciprian Raulea, Camelia Vasarhelyi (<i>Psihologia Muncii, Transporturilor si Serviciilor</i>) / Sala E 73</p>
17.00-19.00	<p>W6 ORIENTĂRI ACTUALE ÎN PRACTICA PSIHOLOGICĂ ÎN DOMENIUL SECURITĂȚII NAȚIONALE Hadrian Marius Jean Vaida (<i>Psihologie pentru aparare, ordine publica si siguranta nationala</i>) / Sala E 72</p>
19.00	<p>W13 ÎNTÂLNIREA DIN UMBRĂ CU CONTRAPARTEA NOASTRĂ SEXUALĂ – UNIFICARE ȘI ARMONIZARE ÎN CUPLU Florin Vancea (<i>Psihologie clinică și psihoterapie</i>) / Sala E73</p>
	ÎNCHIDEREA WORKSHOPURILOR ȘI A CONFERINȚEI / Sala E72
24 mai 2014	ACTIVITĂȚI DE VIZITARE A OBIECTIVELOR TURISTICE

